

SHARP®

Advanced Digital Laser Copier / Printer with Two Paper Trays

features & benefits

- Two-sided / duplex copying and printing
- Two 250-sheet paper trays
- 30-Sheet automatic document feeder (ADF)
- 16 Copies per minute utilizing the Sharp Single Scan System (SOPM)
- Prints up to 12 pages per minute*
- Full COLOR USB scanning - 9600 dpi interpolated
- Sharpdesk™ an innovative software solution for managing scanned documents and images
- Multiple paper sizes Executive to Legal copying/printing/scanning
- Single increment zoom function (25% - 400%)

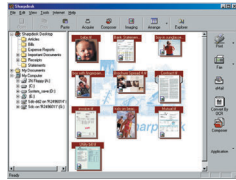
*Actual print speed depends on the computer CPU, installed memory, number of open applications, and if applicable, parallel port setting.



***two-sided
copying
& printing***

AL-1642CS
digital laser
MFP

Sharpdesk™ – powerful, flexible and intuitive document management software that integrates your business documents regardless of the application used to create them



Automatic two-sided / duplex copies and prints saves paper and expense



copier specifications

Type/Platen Design	Desktop digital copying Machine/Stationary
Original Size / Copy Size	Max: 8 1/2" x 14" / 8 1/2" x 14" to 3.5" x 5.5"
Copy Speed / Continuous Copy	16 copies per minute / Maximum 99 copies
Copy Ratio	Variable: 25% to 400% (in 1% increments) Fixed: 25%, 64%, 78%, 100%, 129%, 400%
Copy Paper Feed	Two 250-sheet paper cassette with 50-sheet automatic bypass feed capability
Resolution / Gradation	600 dpi output / scans 256 levels of gray scale

printer specifications

Print Speed / Resolution	Up to 12 ppm*, letter size / 600 x 600 dpi
Port Types	Parallel; USB 1.1 (requires Windows® '98/2000 or later)
Print Size	8 1/2" x 14" to 3.5" x 5.5"
Minimum System Requirements (for printing)	Computer type: IBM PC/AT or compatible computer equipped with a bi-directional parallel interface or USB port and CD-ROM drive. Windows® 95, 98, Windows® Me, Windows® NT 4.0, Windows® 2000, Windows® XP. Hard disk space: 10 MB or more. Hardware requirements, such as CPU performance rating and amount of RAM installed, are the same as for your operating system.
Printer Memory	8MB shared with copier

scanner specifications

Resolution	Color 600 x 1,200 dpi (optical); 2,400 dpi maximum interpolated
Driver Standards / Bit Depth	TWAIN; WIA (Windows® XP only); STI / 24 bit color
Compatibility	Windows® 98/ME/2000/XP
Interface	USB 1.1 (scanner not accessible through parallel port)
Scanner Software	SharpDesk 2.7 desktop document management software with Button Manager for scan destination control and image-to-text OCR

general specifications

First Copy Time	9.6 seconds (normal copying mode) 16 seconds or less (copying from warm-up mode) 23 seconds or less (copying from auto power shut-off mode)
Power Requirements / Power Consumption (maximum)	120 VAC ± 10%; 60HZ ± 2% / 1,000 W
Dimensions & Weight Unit / Carton (w x d x h)	19.6" x 18.2" x 11.7" @ 43.7 lbs. / 25.1" x 23.6" x 19.7" @ 51.3 lbs.
Country of Origin	China
1 Year Limited Warranty	1 years parts / 1 year labor from date of purchase. For terms & conditions see the warranty statement or visit our web site.

supplies

Toner	AL-110TD (Yield: approx. 4,000 letter size copies, 5% image area)
UPC Code Unit / Carton	0 74000 05552 0 / 100 74000 05552 7
Drum Cartridge	AL-100DR (Yield: Approx. 18,000 copies)
UPC Code Unit / Carton	0 74000 05509 4 / 100 74000 05509 1

Design and specifications are subject to change without notice.

*Actual print speed depends on the computer CPU, installed memory, number of open applications, and if applicable, parallel port setting. © 2004, Sharp Electronics Corporation. Sharp is a registered trademark of Sharp Corporation; all other trademarks and registered trademarks are the property of their respective holders. As an Energy Star® Partner, Sharp has determined that this product meets the Energy Star guidelines for energy efficiency.
December 2004



SHARP®

SHARP ELECTRONICS CORPORATION
SHARP PLAZA
MAHWAH, NEW JERSEY 07430-1163
1-800-BE-SHARP