

# Canon



**GRAPHIC ARTS SOLUTIONS**



 **imagePROGRAF®**  
**iPF700/600/500**

## LARGE-FORMAT SOLUTIONS

### imagePROGRAF®—EXPECT MORE, DO MORE

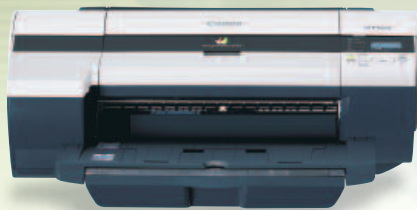
Once again, Canon raises the bar. The imagePROGRAF Corporate and CAD Series printers put Canon's most advanced imaging technology and software solutions to work in large-format printing systems. This series of printers incorporates the perfect combination of technology that goes from printing oversize office documents to exacting technical drawings to posters and back...effortlessly.



36" imagePROGRAF iPF700



24" imagePROGRAF iPF600



17" imagePROGRAF iPF500

Loaded with features specifically developed for technical document applications and business customers looking for productivity, high-quality print, ease-of-use, and cost-effective operation, the Corporate and CAD Series printers are ideal for:

- **General Business Environments**

Users who need to create presentations, signs, posters, displays, document/packaging proofs, or other oversize prints interspersed with everyday, general color business documents in bold, expressive color

- **Technical Documents**

Users creating CAD drawings, architectural elevations, GIS maps, marketing planograms, or other renderings requiring fine sharp lines, smooth curves, crisp text, fade/scratch resistance, and fast print speeds

 **imagePROGRAF®**  
**iPF700/600/500**

## TECHNICALLY SKILLED, BUSINESS SAVVY

### High-speed printing solutions that do more than just print

The imagePROGRAF iPF700/600/500 Corporate and CAD Series of large-format printing systems brings Canon color printing innovation to technical documents and business applications. This new series of imagePROGRAF printers incorporates Canon's large-format printing solutions into affordable and versatile packages focused on the needs of technical design professionals and general business users.

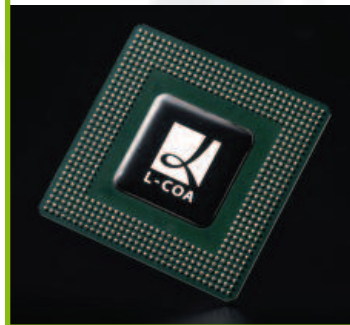
Canon's unique five-color dye/pigment ink system uses four highly colorfast dye inks and a pigment-based Matte Black ink to optimize print image quality on all types of media.

The intelligent L-COA (Large-format printer COmmon Architecture) controller, an exclusive Canon technology, optimizes image processing and print engine performance while directing the high-precision, super high-density FINE print head. With 15,360 nozzles, this print head achieves true 2400 x 1200 dpi images at remarkable print speeds.

An included suite of workflow solutions sets this Series apart from all others in its class. Canon's Printer Driver 2006 provides complete page setup and print management options for all levels of users. The HDI Driver is designed specifically for printing from AutoCAD®. The new PosterArtist 2006 adds variable data printing capabilities and Quick Copy functions to Canon's popular poster creation software. The PhotoPRINT Select RIP (standard with the 36" imagePROGRAF iPF700 printer) features true Adobe® PostScript® 3™ plus HPGL-2\* support.

And these advanced technologies are just the beginning...

*\*HPGL-2, DXF, and DWG are supported by Windows® version of PhotoPRINT only.*



L-COA Processor





## QUALITY OUTPUT, QUICKLY AND PRODUCTIVELY

All the technology you want, all the productivity you need

### CANON BRINGS INNOVATION TO TECHNICAL DOCUMENTS

Canon's large-format printing systems deliver the perfect blend of print quality, ease-of-use, speed, and cost-effective operation for engineering, architecture, mapping, and other technical applications.



Ink Tank System

Whatever the discipline, all these technical users share common needs such as sharp lines, crisp text, bold expressive color, fast output, low operating cost, and reliability. Compatible with a full line of media types—including CAD paper, matte-coated paper, and

film—the imagePROGRAF printers deliver the performance that users worldwide expect from Canon. From smooth lines and deep blacks on any media type to powerful document processing technology that optimizes output speed and quality based on image content, Canon has engineered these printers to seamlessly manage the complexities of color and content integrated with technical line drawings.



### LINES, LETTERS, AND GRAPHICS NEVER LOOKED SO GOOD

Canon's breakthrough five-color dye/pigment ink technology uses four highly colorfast dye inks (CMYK) and a pigment-based Matte Black (MBK) ink. The dye black is used with high-color prints on glossy paper and proofing paper. Two matte black ink reservoirs are used for high-speed printing of line drawings and text-oriented office documents. Canon's reactive ink technology is created by combining matte black ink with cyan ink. This prevents ink from spreading at the border between color and black output. This ensures clear text, smooth curves, and sharp, fine lines on any media, whether the black printing is set against white or color backgrounds. The unique ink formulation also provides improved resistance against scratches and marks when compared to conventional dye inks.

To ensure optimum productivity, a six-tank ink delivery configuration is employed. This allows both black inks (pigment and dye-based) to be installed at all times so there's no need to change ink formulations based on media type. Two dedicated matte black ink lines are used to enable faster printing of many technical documents.



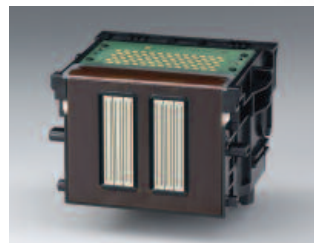
PosterArtist Sample

### **INTELLIGENT ENGINEERING MAKES QUICK WORK OF COMPLEX DOCUMENTS**

The imagePROGRAF printers are designed to deliver hassle-free, multiuse image processing—and ideal prints, regardless of image content and without complicated management of print settings. The power of these printers begins at their core with Canon’s innovative L-COA (Large-format printer COmmon Architecture) processor—the digital brain that dynamically optimizes output speed and print quality based on the type of image and the media used. The L-COA controller intelligently processes print data and directs the high-precision, high-density print head to deposit ink with unprecedented speed and accuracy. Whether creating graphics, eye-catching posters, spreadsheets, charts, or detailed technical drawings, this unique processor ensures that the final output is optimized for maximum readability, accuracy, and productivity.

### **HIGH-SPEED PRINTING WITHOUT COMPROMISE**

The L-COA architecture provides the basis for rapid image processing and channels the output through Canon’s latest generation ultra high-density print heads with integrated FINE print head technology. This large one-inch print head deposits tiny four-picoliter (4pl) ink droplets through 15,360 ink nozzles to enable high-speed output at true 2400 x 1200 dpi resolution. An A1-sized print in fast mode can be output in as little as 35 seconds\* (iPF600), so you won’t sacrifice productivity while getting unsurpassed document quality.



Print Head

*\*Refer to the specifications page for printing conditions.*

## VERSATILITY BUILT IN

imagePROGRAF Corporate and CAD Series printers deliver the tools to take you to new heights—and new sizes.

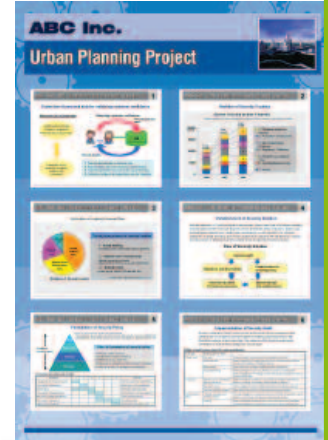
### COMPLETE WORKFLOW SOLUTIONS FOR LARGE-FORMAT PRINTING

In the past, creating top-quality large-format output meant stepping through a dizzying array of options. Not anymore. Built for performance and reliability in everyday use, imagePROGRAF printers come with a suite of advanced software solutions that address the image manipulation, management, and workflow integration requirements unique to large-format production, giving you the ability to create, process, and print breathtaking large-format output. These applications include:

- **PosterArtist:** Create and customize posters, banners, and signs with this intuitive, template-driven software.
- **Canon Printer Driver 2006:** A highly functional printer driver for users of all levels.
- **HDI Driver for AutoCAD:** Converts line drawing data directly from AutoCAD for accurate renderings and faster processing speed.
- **PhotoPRINT Select RIP (iPF700 model):** Efficiently manage workflow and production of high-end graphics and technical documents. Includes PostScript 3 and HPGL/HPGL-2\* support.

\* HPGL-2, DXF, and DWG are supported by Windows version of PhotoPRINT only.

\*\* CanoScan scanner sold separately.



PosterArtist Page Capture

### POWERING YOUR CREATIVITY

Design, customize, and print posters, banners, and signs with the latest generation of PosterArtist, Canon's poster-making software. Easily create and customize posters, banners, and signs with over 175 pre-designed templates. Plus, PosterArtist delivers a suite of powerful graphics capabilities that extend your creative and presentation capabilities, including:

- **Page Capture:** Quickly capture Microsoft® Office documents and other types of files to assemble multipage displays on a single, large-format sheet.
- **Variable Data Insertion:** Create multiple printouts with variable content that you define.
- **QuickCopy Enlargement:** Quickly enlarge files scanned with a CanoScan® scanner\*\* to easily create posters.



PosterArtist Screen Shot

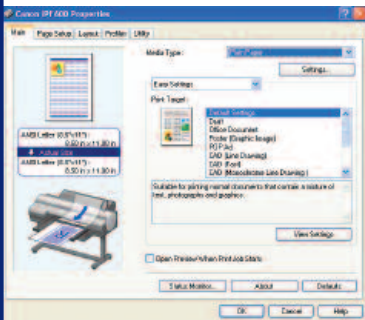
# CANON MAKES IT EASY TO PRINT LIKE A PRO

## PRINTING MADE EASY

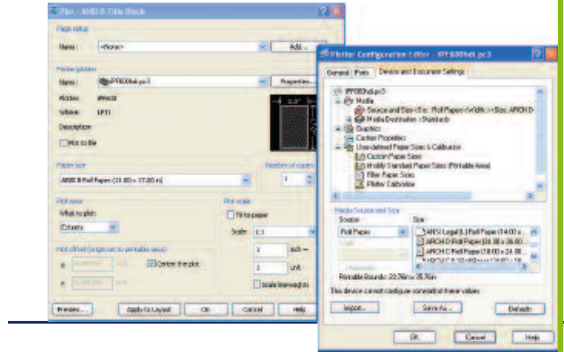
The Canon Printer Driver 2006 provides users of all levels with page setup and print management options that make producing professional results easier than ever. The Windows® and Macintosh® drivers include both easy and advanced management levels of page setup, color settings, print mode, one-touch borderless printing, and more. Select from pre-defined print priority settings to easily obtain quality output of images, line drawings, and office documents.

## PUT IT ALL TOGETHER WITH FREE LAYOUT

From Microsoft Word to Excel files to graphics and photos, office documents come in all shapes, sizes, and styles. The imagePROGRAF Printer Driver 2006 Free Layout function enables documents of different file formats to be composed onto a single page and printed together. Graphics, charts, tables, and text can now be easily assembled to create high-impact posters and presentations.



Print Driver 2006



HDI Driver

## ENLARGEMENTS MADE EASY

Create enlargements of existing hard-copy documents with the touch of a button.

The Printer Driver 2006 seamlessly integrates a Canon imageRUNNER® device with Universal Send and an imagePROGRAF large-format printer to create a simple enlargement system.

## OUTPUT TECHNICAL DOCUMENTS DIRECTLY FROM AutoCAD

Standard on all three printers, the imagePROGRAF HDI driver is designed for high image quality and easy operation when printing AutoCAD files.

## VERSATILITY IN OUTPUT

PhotoPRINT Select, standard with the imagePROGRAF iPF700 printer, is a genuine Adobe PostScript 3 software RIP. With features such as ICC color profiling, a PANTONE® color library, HPGL/HPGL-2\* support, and print queues to more efficiently integrate with other Canon imaging systems, managing workflow and the production of high-end graphics and technical documents has never been easier.

\*HPGL-2, DXF, and DWG are supported by Windows version of PhotoPRINT only.



## PRINTER BUILT FOR BUSINESS

### FLEXIBLE OPTIONS FOR YOUR LARGE-FORMAT OUTPUT

The 17- to 24-inch Corporate and CAD Series printers provide four-way media feed options, including roll feed (optional on the iPF500 model), media cassette for sheet-fed operation, and media feed slot for manual feed from the top and the front. From lightweight drafting paper to heavyweight stock, you can rapidly adapt your output to the media required. A built-in rotary cutter makes cutting all types of roll paper simple. Plus, two paper sources can be loaded at the same time, making it easy to productively switch between standard-size sheet output and roll-fed large-format printouts. The 36-inch imagePROGRAF iPF700 printer has roll feed and cut-sheet capabilities.



iPF700 Control Panel

### SIMPLE MAINTENANCE

The output may be sophisticated, but maintaining Canon imagePROGRAF printers is simple. Operator-friendly features, including an interactive user-interface, enhanced print status monitor, simplified paper loading, and ink maintenance, make these printers easy to configure, use, and maintain. An array of integrated system adjustments optimize print parameters based on media selection, environmental conditions, and print head performance.

Ink is stored in individual, high-capacity tanks that reduce the need for refilling. Plus, a host of automated systems help monitor ink levels, paper availability, color registration, and other operating parameters to provide fast feedback to the user. The bottom line—more time printing and less time maintaining.

### COMPATIBLE IN ANY OFFICE ENVIRONMENT

A compact design makes imagePROGRAF printers easy to set up in virtually any office environment. The imagePROGRAF iPF500 printer is a convenient desktop model, while the imagePROGRAF iPF600 model can be used on a desktop or a supplied stand; the imagePROGRAF iPF700 model comes with a printer stand.

All imagePROGRAF CAD and Corporate Series printers include a built-in 10Base-T/100Base-TX network interface and a USB 2.0 High-Speed interface. An optional IEEE1394 (Firewire) interface is also available.



## iPF600/500 MAIN UNIT

**Print Head (PF-01)**  
 • Technology  
 - FINE (Full-Lithography Ink-Jet Nozzle Engineering)

**Print Resolution (Max.)**

• 2400 x 1200 dpi

**Line Accuracy\***

• ±0.1% or Less

**Minimum Line Weight\*\***

• 0.02mm

**Number of Nozzles**

• Matte Black:  
 - 5,120 Nozzles  
 • Other Colors:  
 - 2,560 Nozzles per Color

**Droplet Size**

• 4 Picoliter for All Colors

**Nozzle Pitch**

• 1200 dpi x 2 Rows

**Print Head Swath**

• 1.07 inch

**Ink Tank**

• PFI-102

**Ink Tank Capacity\*\*\***

• 130ml Per Tank

**Number of Colors**

• 5

**Ink Type**

• Dye  
 - Cyan (C), Magenta (M), Yellow (Y), Black (K)  
 • Pigment  
 - Matte Black (MBK)

**Ink Supply Method**

• Tubing System

**Nozzle Recovery System**

• Non-Firing Nozzle Detection and Compensation

**Printer Controller**

• L-COA Controller

**Printer Memory**

• iPF600  
 - 192MB  
 • iPF500  
 - 128MB

**Media Feed**

• iPF600  
 - Top-Loading Manual Feed, Front-Loading Manual Feed, Cassette, Top-Loading Roll Feed  
 • iPF500  
 - Top-Loading Manual Feed, Front-Loading Manual Feed, Cassette  
 • Optional  
 - Top-Loading Roll Feed

**Media Width**

• Roll Feed, Manual Feed  
 - iPF600: 8" - 24" (203mm - 609mm)  
 - iPF500: 8" - 17" (203mm - 432mm)  
 • Cassette  
 - 8" - 17" (203mm - 432mm)

**Printable Margins**

• Roll Feed  
 - All Sides: 0.12" (3mm) or 0" for Borderless  
 • Cassette  
 - All Sides: 0.12" (3mm)  
 • Manual Feed  
 - Left, Right, Trailing: 0.12" (3mm), Leading: 0.90" (23mm)

**Minimum Printable Media Length**

• Roll Feed  
 - 8.00" (203mm)  
 • Cassette  
 - 10.00" (254mm)  
 • Top-Loading Manual Feed  
 - 10.98" (279mm)  
 • Front-Loading Manual Feed  
 - 20.47" (520mm)

**Maximum Printable Media Length†**

• Roll Feed  
 - 59 feet (18m)  
 • Cassette  
 - 23.38" (594mm)  
 • Manual Feed (Top/Front)  
 - iPF600: 63" (1600mm)  
 - iPF500: 24" (609mm)  
 • Cassette Capacity (Plain Paper)  
 - 250 Sheets (Letter-Sized)  
 - 100 Sheets (up to 13" x 19" Sized)  
 - 50 Sheets (up to 17" x 22" Sized)

**Borderless Printing Widths (Roll Media Only)**

• iPF600/500  
 - 10", 13", 14", 16", 17", B4 (10.12"/257mm), A2 (16.54"/420mm)  
 • iPF600 Only  
 - 24" (609mm)  
 B2 (20.28"/515mm)  
 A1 (23.38"/594mm)

**Media Cutter**

• Durable Rotary Blade

**Media Thickness**

• Cassette  
 - 0.08 - 0.3mm (3.2 - 11.8mil)  
 • Top-Loading Manual Feed  
 - 0.08 - 0.5mm (3.2 - 19.6mil)  
 • Front-Loading Manual Feed  
 - 0.5 - 1.5mm (19.6 - 59.0mil)  
 • Roll Feed  
 - 0.07 - 0.8mm (2.8 - 31.4mil)

**Media Core Sizes**

• 2" or 3" Core  
 (2/3" Core Adapter Included)

**Maximum Roll Outer Diameter**

• 5.9" (150mm)

**Software**

• Printing Software  
 - Printer Driver 2006, HDI Driver for AutoCAD/AutoCAD LT 2000-2006†, Printer Driver Extra Kit\* (Free Layout, imageRUNNER Linking Function)  
 • Applications  
 - PosterArtist 2006\*\*  
 • Utilities  
 - Media Configuration Tool, GARO Device Setup Utility  
 • Device Status  
 - GARO Status Monitor, Remote UI  
 • Printer Language  
 - GARO (Canon Proprietary)

**Operating Systems\***

• Windows® 98SE/Me/2000/XP/2003 Server, Macintosh® OS 9.1/X 10.2/10.3/10.4

**Interface**

• Standard (Built-in)  
 - USB 2.0 High Speed, 10/100Base-T/TX  
 • Optional  
 - IEEE1394 (FireWire®)

**Acoustic Noise**

• Operation  
 - 53dB (A) or Less  
 • Standby  
 - 35dB (A) or Less  
 • Acoustic Power  
 - 6.7 Bels

**Power Supply**

• AC 100-120V (50-60Hz)

**Power Consumption**

• Maximum  
 - 100W or Less  
 • Standby  
 - 6W or Less (7W or less when EB-05 is installed)  
 • Power Off  
 - Less than 1W (Executive Order Compliant)

**Certifications**

• UL®, FCC Class B, ENERGY STAR®

**Operational Environment**

• Temperature  
 - 59 - 86 °F (15-30 °C)  
 • Relative Humidity  
 - 10 - 80% (No Condensation)

**Dimensions (H x W x D)**

• iPF600 (with Stand)  
 - 39.0" x 39.3" x 38.6" (990mm x 999mm x 981mm)  
 • iPF500  
 - 12.5" x 32.2" x 28.9" (317mm x 819mm x 733mm)

**Weight**

• iPF600 (with Stand)  
 - Approx. 190 lb. (72kg)  
 • iPF500  
 - Approx. 86 lb. (39kg)

**Options**

• IEEE1394 Expansion Board (EB-05)  
 • EFI Colorproof XF for Canon  
 • iPF600  
 - Roll Holder Set (RH2-24)  
 • iPF500  
 - Auto Roll Feed Unit (RU-01)  
 - Cabinet Stand (CB17-01)  
 - Roll Holder Set (RH2-11)

**User Replaceable Items**

• Print Head (PF-01)  
 • Ink Tanks (PFI-102)  
 • iPF600  
 - Maintenance Cartridge (MC-06)  
 • iPF500  
 - Maintenance Cartridge (MC-05)

**What's In The Box**

• iPF600/500  
 - Printer, User Software CD (Printer Driver, HDI Driver, Utilities), Application CDs (PosterArtist Disk 1, 2), 6 Starter Ink Tanks (MBK x2, Cyan, Magenta, Yellow, Black), 2" Core Media Spool, Print Head, Maintenance Cartridge, Media Cutter, Built-in Ethernet/USB 2.0 Interface, Quick Setup Guide (Poster), Printer Reference Guide (Booklet), Power Cord, One-Year Onsite Warranty, Registration Card  
 • iPF600 Only  
 - Stand, Basket, Hardware (For Setting Up the Stand)

\* After user adjustment, and under the same environmental conditions. Applies to media for line drawing only.  
 \*\* Theoretical value based on data resolution.

\*\*\* The starter ink tanks initially packaged with the printer are not the same capacity as the replacement ink tanks specified here.

† The maximum printable length varies depending on the application, OS, and RIP used. The maximum printable length from Printer Driver 2006 is 50 feet.

†† For AutoCAD or AutoCAD LT 2000, 2000i, 2002, 2003, 2004, 2005, 2006  
 ■ Windows 2000/XP/2003 Server  
 ■ Windows 2000/XP

▲ For imagePROGRAF Printer Driver 2006. For printing from PostScript applications such as Adobe Illustrator® or QuarkXPress™, please use a PostScript compatible RIP package. For a list of Canon recommended RIP packages, please consult with Canon Alliance and Industry Market program list of RIP vendors.

**iPF600/500 Line Drawing Print Speed (Min., Sec.)**

Paper Type	Print Mode	Resolution	iPF600	iPF500
Plain Paper	Fast	1200 x 1200	35 Sec.	21 Sec.
	Standard	1200 x 1200	44 Sec.	26 Sec.
Coated Paper	Fast	1200 x 1200	46 Sec.	28 Sec.
	Standard	2400 x 1200	1 Min. 20 Sec.	47 Sec.
	High	2400 x 1200	2 Min. 9 Sec.	1 Min. 15 Sec.

**[CAD Drawing]**

OS: Windows XP SP2, CPU: Pentium® 4 3.2GHz, RAM: 1GB, Application: AutoCAD 2004 LT, driver: HDI driver, Interface: USB 2.0 High-Speed, Output image size: iPF700: A0 (32.5" x 40.6" or 827mm x 1033mm); iPF600: A1(22.8" x 28.5" or 580mm x 724.9mm); iPF500: A2 (16.1" x 20.1" or 410mm x 512.5mm)

Each print time stated here is actual measurement of sample image output speed and is not the maximum printer speed. The data does not include data transfer time. The print speed may vary depending on the data volume and size, PC, application, software, and interface. Measured by Canon Inc.

**iPF600/500 Image Print Speed (Square Feet Per Hour)**

Paper Type	Print Mode	Resolution	iPF600	iPF500
Plain Paper	Fast	1200 x 1200	514	415
	Standard	1200 x 1200	304	238
Coated Paper	Standard	1200 x 1200	146	122
	High	2400 x 1200	69	60
	Highest	2400 x 1200	47	41
Glossy Paper	Standard	1200 x 1200	98	80
	High	2400 x 1200	91	60

**[SCID N5 ("bicycle")]**

OS: Windows XP SP2, CPU: Pentium 4 3.2GHz, RAM: 1GB, Application: Adobe® Photoshop® 7.0, Interface: USB 2.0 High-Speed, Output image size: iPF600: A1(580mm x 724.9mm); iPF500: A2 (410mm x 512.5mm)

Each print time stated here is actual measurement of sample image output speed and is not the maximum printer speed. The data does not include data transfer time. The print speed may vary depending on the data volume and size, PC, application, software, and interface. Measured by Canon Inc.

**iPF700 MAIN UNIT**
**Print Head (PF-01)**

- Technology
  - FINE (Full-Lithography Ink-Jet Nozzle Engineering)

**Print Resolution (Max.)**

- 2400 x 1200 dpi

**Line Accuracy\***

- ±0.1% or Less

**Minimum Line Weight\*\***

- 0.02mm (0.00083")

**Number of Nozzles**

- Matte Black
  - 5,120 Nozzles
- Other Colors
  - 2,560 Nozzles per Color

**Droplet Size**

- 4 Picoliter for All Colors

**Nozzle Pitch**

- 1200 dpi x 2 Rows

**Print Head Swath**

- 1.07 Inch

**Ink Tank**

- PFI-102

**Ink Tank Capacity\*\*\***

- 130ml per Tank

**Number of Colors**

- 5

**Ink Type**

- Dye
  - Cyan (C), Magenta (M), Yellow (Y), Black (BK)
- Pigment
  - Matte Black (MBK)

**Ink Supply Method**

- Tubing System

**Nozzle Recovery System**

- Non-Firing Nozzle Detection and Compensation

**Printer Controller**

- L-COA Controller

**Printer Memory**

- 256MB

**Media Feed**

- Rear-Loading Roll Feed, Front-Loading Manual Feed
- Roll Feed Media Width
  - 10" – 36" (254mm – 914mm)
- Cut Sheet Media Width
  - 8" – 36" (203mm – 914mm)

**Printable Margins**

- Roll Feed
  - All Sides: 0.12" (3mm) or 0" For Borderless
- Cut Sheet
  - All Sides: 0.12" (3mm)

**Printable Media Length†**

- Roll Feed
  - 8.00" – 59 ft. (203mm – 18m)
- Cut Sheet
  - 8.00" – 63" (203mm – 1.6m)

**Borderless Printing Widths**

- (Roll Media Only)
  - 10", 13", 14", 16", 17" B4 (10.12"/257mm)
  - A2 (16.54"/420mm)
  - B2 (20.28"/515mm)
  - A1 (23.38"/594mm)
  - 24" (609mm)
  - B1 (28.66"/728mm)
  - A0 (33.11"/841mm)
  - 36" (914mm)

**Media Cutter**

- User-Replaceable Durable Rotary Blade

**Media Thickness**

- 0.07 – 0.8mm (2.8 – 31.4mil)

**Media Core Sizes**

- 2" or 3" Core (with Optional 3" Core Spool)

**Maximum Roll Outer Diameter**

- 5.9" (150mm)

**Software**

- Printing Software
  - Printer Driver 2006, HDI Driver for AutoCAD/AutoCAD LT 2000–2006™, Printer Driver Extra Kit\* (Free Layout, imageRUNNER Linking Function)
- Applications
  - PosterArtist 2006\*\*
- Utilities
  - Media Configuration Tool, GARO Device Setup Utility
- Device Status
  - GARO Status Monitor, Remote UI
- Software RIP
  - PhotoPRINT Select for imagePROGRAF\*\*\*
- Printer Language
  - Hardware: GARO (Canon Proprietary)
- Via Software
  - Adobe® PostScript® Level 3, PDF, TIFF, JPEG, BMP, HP-GL/2, HP-RTL, DWG, DXF

**Operating System\***

- Windows® 98SE/Me/2000/XP/2003 Server, Macintosh® OS 9.1/X 10.2/10.3/10.4

**Interface**

- Standard (Built-in)
  - USB 2.0 High Speed, 10/100Base-T/TX
- Optional
  - IEEE1394 (FireWire®)

**Acoustic Noise**

- Operation
  - 50dB (A) or Less
- Standby
  - 30dB (A) or Less

- Acoustic Power
  - 6.3 Bels

**Power Supply**

- AC 100–240V (50-60Hz)

**Power Consumption**

- Maximum
  - 160W or Less
- Standby
  - 6.8W or Less (13W or Less When EB-05 is Installed)
- Power Off
  - Less than 1W (Executive Order Compliant)

**Certifications**

- UL®, FCC Class B, ENERGY STAR®

**Operational Environment**

- Temperature
  - 59 – 86 F° (15–30 C°)
- Relative Humidity
  - 10 – 80% (No Condensation)

**Dimensions (With Stand H x W x D)**

- 43.2" x 59.3" x 29.6" (1097mm x 1507mm x 752mm)

**Weight (With Stand)**

- Approx. 130 lb. (58.8kg)

**Options**

- IEEE1394 Expansion Board (EB-05) 2" Core Spool (RH2-32)
- 3" Core Spool (RH3-32)
- EFI Colorproof XF for Canon

**User Replaceable Items**

- Print Head (PF-01)
- Ink Tanks (PFI-102)
- Maintenance Cartridge (MC-07)

**What's In The Box**

- Printer, Stand, Basket, User Software CD (Printer Driver, HDI Driver, Utilities), Application CDs (PosterArtist Disk 1, 2), Software RIP CD (PhotoPRINT Select for imagePROGRAF), 6 Ink Starter Ink Tanks (2x MBK, Cyan, Magenta,

- Yellow, Black), 2" Core Media Spool RH2-32, Print Head PF-01, Maintenance Cartridge MC-07, Media Cutter CT-05, Ethernet/USB 2.0 Interface, Quick Setup Guide (Poster), Printer Reference Guide (Booklet), Hardware (for Setting Up the Stand), Power Cord, One-Year Onsite Warranty, Registration Card

\* After user adjustment, and under the same environmental conditions. Applies to media for line drawing only.

\*\* Theoretical value based on data resolution.

\*\*\* The starter ink tanks initially packaged with the printer are not the same capacity as the replacement ink tanks specified here.

† The maximum printable length varies depending on the application, OS, and RIP used. The maximum printable length from Printer Driver 2006 is 50 feet.

†† For AutoCAD or AutoCAD LT 2000, 2000i, 2002, 2003, 2004, 2005, 2006

■ Windows 2000/XP/2003 Server

■ Windows 2000/XP

▲ For imagePROGRAF Printer Driver 2006. For printing from PostScript applications such as Adobe Illustrator® or QuarkXPress™, please use a PostScript compatible RIP package. For a list of Canon recommended RIP packages, please consult with Canon Alliance and Industry Market program list of RIP vendors.


  
**image**ANYWARE

1-800-OK-CANON  
 www.usa.canon.com

Canon U.S.A., Inc.  
 One Canon Plaza  
 Lake Success, NY 11042

As an ENERGY STAR® Partner, Canon U.S.A., Inc. has determined that these products meet the ENERGY STAR guidelines for energy efficiency. ENERGY STAR and the ENERGY STAR mark are registered U.S. marks. QuarkXPress is a trademark of Quark, Inc. and all applicable affiliated companies, Reg. U.S. Pat. and Tm. Off. and in many other countries. Pentium is a trademark or registered trademark of Intel Corporation or its subsidiaries in the United States and/or other countries. AutoCAD is a trademark of Autodesk, Inc. in the United States. Microsoft and Windows are registered trademarks of Microsoft Corporation in the United States and/or other countries. Macintosh is a trademark of Apple Computer, Inc. Adobe, Illustrator, Photoshop and PostScript are registered trademarks or trademarks of Adobe Systems Incorporated in the United States and/or other countries. PANTONE is a registered trademark of Pantone, Inc. UL is a registered trademark of Underwriter's Laboratories Inc. CANON, CANOSCAN, IMAGEPROGRAF, and IMAGERUNNER are registered trademarks of Canon Inc. in the United States and may also be registered trademarks or trademarks in other countries. IMAGEANYWARE is a trademark of Canon. All referenced product names and other marks are trademarks of their respective owners.

Specifications subject to change without notice.  
 Some products shown with optional accessories.

©2006 Canon U.S.A., Inc. All rights reserved.

0063W889

0606-700/600/500-15M-LNR



PRINTED ON RECYCLED  
 PAPER IN THE U.S.A.



Full-photolithography Inkjet  
 Nozzle Engineering

