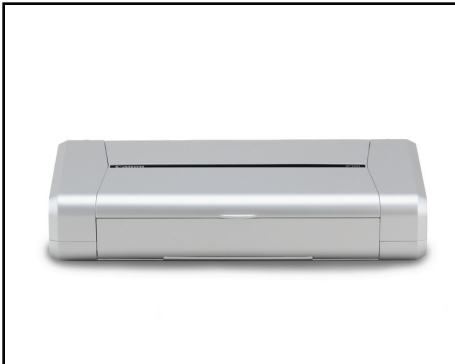


Stylish High-Resolution Printer for your Mobile Lifestyle.

- Maximum 9600 x 2400 color dpi¹ with microscopic droplets as small as 1 picoliter
- Fast printing up to 20 ppm Black / 14 ppm Color and a photo lab quality, borderless 4" x 6" photo in approx. 50 seconds²
- Enhance your photos with Auto Image Fix
- FINE print head technology for impressive speed and remarkable detail
- Wireless printing capable from PCs and camera phones via IrDA³ or optional Bluetooth⁴



FEATURES

SPEED & QUALITY

9600¹
dpi
Maximum

1pl
Technology

Up To
20 14
Black Color
ppm²

5 Color

Approx.
50
SEC
4" x 6" Photo²

EASE OF USE



Auto Image Fix

CONNECTIVITY

USB 2.0
Hi-Speed



Camera
Phone
Printing^{3,4,5}



Bluetooth⁴
(Optional)

Win
Mac

TECHNICAL SPECIFICATIONS⁶

PRINT	
Print Features Auto Image Fix, Auto Sheet Feeder, Document Printing, Photo Printing	
Print Speed²	
4" x 6" Borderless Photo:	Approx. 50 seconds
Black:	Up to 20 ppm (As fast as 3.0 seconds per page)
Color:	Up to 14 ppm (As fast as 4.3 seconds per page)
Number of Nozzles Black: 320 / Color: 1,536 / Total: 1,856	
Picoliter Size (Color) 1, 2 and 5	
Print Resolution¹	
Color:	Up to 9600 x 2400 dpi
Black:	Up to 600 x 600 dpi
Paper Sizes Credit Card (2.13" x 3.39"), 4" x 6", 4" x 8", 5" x 7", 8" x 10", Letter, Legal, U.S. #10 Envelopes, Photo Stickers	
Paper Tray Capacity (Plain Paper) Auto Sheet Feeder: 50 Pages	
GENERAL	
Noise Level Approx. 38.5 dB(A) in the best quality mode	
Power Consumption (Approx.) 9W (1.5W Standby)	

INTERFACE
Standard Interface USB 2.0 Hi-Speed PictBridge (Cable not included) IrDA 1.4 ³ Bluetooth® v2.0 ⁴ (Optional)
OS COMPATIBILITY ⁷
Windows Vista™, Windows XP/2000 and Mac OS® X v10.2.8 to 10.5.x
SOFTWARE (WINDOWS/MAC)
Setup Software & User's Guide CD-ROM PIXMA iP100 Printer Driver Easy-PhotoPrint EX
WARRANTY
Toll-free technical phone support plus 1-year limited warranty with InstantExchange Program. ⁸
BOX CONTENTS
PIXMA iP100 Mobile Printer Document Kit: Easy Setup Instructions Leopard Information Sheet Quick Start Guide Setup Software & User's Guide CD-ROM User Guide Ink Cartridges: PGI-35 Pigment Black CLI-36 CMYK Color AC Adapter Power Cord Print Head Bundled Media MP-101 (8.5" x 11"/2 sheets) Sample Media PP-201 (4" x 6"/5 sheets)

SPECIFICATIONS ARE SUBJECT TO CHANGE WITHOUT NOTICE

- 1 Resolution may vary based on printer driver setting. Color ink droplets can be placed with a horizontal pitch of 1/9600 inch at minimum.
- 2 PPM print speeds are based on the highest speed printer driver mode using black and white and color text patterns. Photo print speeds are based on the standard mode driver setting using photo test pattern(s) and select Canon Photo Paper. Print speed measured as soon as first page begins to feed into printer and will vary depending on system configuration, interface, software, document complexity, print mode, types of paper used and page coverage. See www.usa.canon.com/printspeed for additional information.
- 3 Requires mobile phone or other device with IrDA port and support for IrMC version 1.1 protocol, with the phone positioned no more than 7.9 inches from the printer.
- 4 Bluetooth v2.0 with optional Canon Bluetooth Unit BU-30. Bluetooth operation depends on the device and software version used. Operating distance is approx. 10 meters but may vary due to obstacles, radio signals, locations where radio interference occurs, magnetic fields from microwave ovens, device sensitivity and/or antenna performance.
- 5 Requires mobile phone equipped with PictBridge technology and a USB cable.
- 6 Specifications are subject to change without notice. All printer images and effects are simulated.
- 7 System requirements vary by application.
- 8 Warranty programs are subject to certain conditions and restrictions. See www.canontechsupport.com for details.

©2008 Canon U.S.A., Inc. Canon and PIXMA are registered trademarks of Canon Inc. in the United States and may be registered trademarks or trademarks in other countries. Microsoft, Windows, Windows Vista and the Windows Vista logo are trademarks or registered trademarks of Microsoft Corporation in the United States and other countries. Macintosh and Mac are trademarks of Apple Inc., registered in the United States and other countries. The USB-IF logo is a trademark of Universal Serial Bus Implementers Forum, Inc. All other product and brand names are trademarks of their respective owners.

