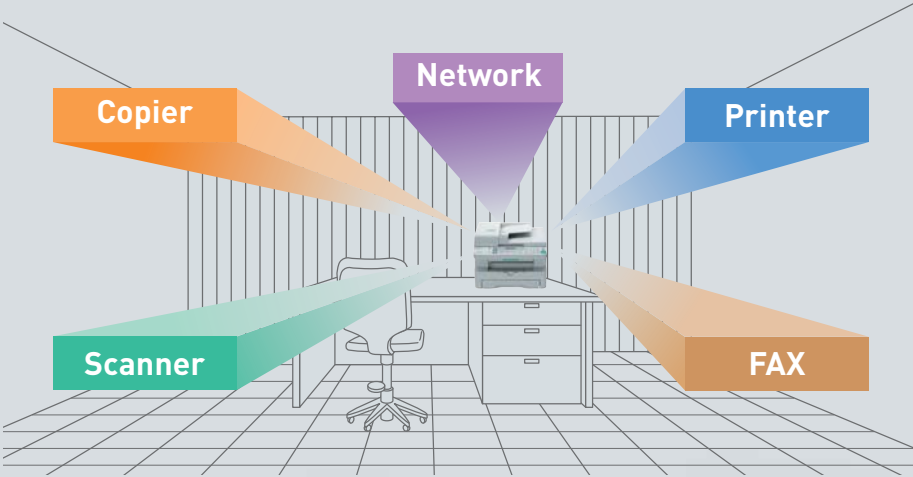


Versatile, high-performance functions greatly improve document handling efficiency

Multi-Function

“5-in-1” multi-Function design dramatically improves business efficiency for every document-related task from faxing and copying to scanning and printing.



KX-MB781 Other Features

Laser Printer

- High-Speed 18-ppm Laser Print Speed
- 600 x 600 dpi Resolution
- Approx. 15 Seconds Warmup Time
- 250-Sheet Paper Capacity
- USB 2.0 High-Speed Interface
- For Microsoft® Windows® 98/Me/2000/XP/Vista*4

Flatbed Copier

- Enhanced 600 dpi Laser Copy Quality
- Up to 18-cpm Copy Speed
- Multiple Copies: up to 99 from One Original
- Enlarge up to 400%, Reduce up to 25%
- Automatic Document Feeder (20-Sheet)

Color Scanner

- Color Scanning with Flatbed and Automatic Document Feeder
- 9600 dpi (Interpolated) Scanning Capability
- 24-bit Color Output, 8-bit Monochrome Output
- TWAIN Compatible
- Scan to PC as PDF, JPEG, BMP or TIFF*4
- Convert Scanned Pages to Editable Documents with Readiris OCR Software*4
- Easy-to-Use Image Viewer*4

Laser Fax

- 33.6 kbps Super G3 FAX
- Resolution: Standard/Fine/Super Fine/Photo
- Reception Memory with backup, up to 170 pages*1,*2
- Transmission Memory, up to 150 pages*1,*2
- 64-Level Photo Resolution
- Dual Access with Reserved Transmission
- Error Correction Mode (ECM)
- PC Fax*4
- Junk Fax Prohibitor

Network

- Easy Setup Through Embedded Web Feature
- User can Scan the Document by using Operation Panel
- The Scanning Data is Sent to PC Automatically
- User can Choose "File Type" and "Application"
- Scan to E-Mail Client can Attach Scanned Data to E-Mail
- The Scan Data (Color/B&W) can be E-Mailed as the Attached Files

Option

KX-FA103
Handset Unit



Consumables†

KX-FAT92
Toner Cartridge
(2,000 pages*1,*5)



KX-FAD93
Drum Unit
(Max. 6,000 pages*6)



KX-MB781 Specifications

General Function

Type:	Desktop
Printing Process:	Laser
Memory Capacity (for Operation and Storing Memory):	32-MB
PC Interface:	USB 2.0 High-speed
Scanning System:	CIS, fixed flatbed
Caller ID Ready*3:	FSK/DTMF
Dialing Mode:	Tone (DTMF)/pulse
Automatic Document Feeder:	20-sheet
Paper Tray:	250-sheet
Warmup Time:	Approx. 15 seconds (20°C)

Printer Function

PC Interface:	USB 2.0 High-speed
Printing Speed:	18-PPM
Printing Resolution:	600 dpi x 600 dpi
Compatible OS*4:	98/Me/2000/XP/Vista
Emulation:	GDI
Paper Handling:	Letter/Legal/A4

Copier Function

First Copy Time:	Approx. 17 seconds (A4)
Memory Copy Speed:	18-CPM
Resolution:	TEXT, TEXT/PHOTO/PHOTO
Multi-Copy:	Up to 99 copies
Enlarge/Reduction Copy:	25 ~ 400% (1% step)

Scanner Function

Color Scanning:	Input 48 bits, output 24 bits
Monochrome Scanning:	Input 16 bits, output 8 bits
Scanning Resolution:	600 dpi x 300 dpi (ADF) 600 dpi x 1200 dpi (Flatbed)

	9600 dpi x 9600 dpi (interpolated)
Scanner Driver:	TWAIN 18

Fax Function

Compatibility:	ITU T G3
Paper Handling:	Letter/A4
Scanning Width:	208 mm
Modem Speed:	33.6 kbps
Transmission Speed:	Approx. 4 seconds per page*1,*5 in ECM-MMR memory transmission
Compression System:	MH / MR / MMR
Resolution:	Standard/fine/super fine/photo
Halftone:	64 levels
Memory Transmission:	Max. 150 pages*2
Memory Reception:	Max. 170 pages*2

Network Function

LAN:	available
Network printer sharing:	available
Network scanner sharing:	available
Network PC-FAX sending:	available
Network Interface:	10 Base-T/100 Base-TX

Power Consumption:

Sleep:	Approx. 5.5 W
Standby:	Approx. 65 W
Copy:	Approx. 320 W
Maximum:	Approx. 900 W when the fuser lamp turns on
Power Source†:	AC 120V, 50/60 Hz
Dimensions (W x D x H):	16.54" x 17.52" x 12.00" 420 mm x 445 mm x 305 mm
Weight:	Approx. 28.7 lb. (13 kg)

*1 Based on ITU-T No.1 test chart.

*2 Max. 170 pages for out-of-paper reception, Max. 150 pages for memory transmission.

*3 Requires subscription to fee-based phone company service.

*4 Available when connected to PC running Microsoft® Windows® 98/Me/2000/XP/Vista.
Multi-function software is included.

*5 5% coverage.

*6 The drum longevity is tested by 20-sheet continued printout intervals.

Microsoft and Windows are registered trademarks of Microsoft Corporation in the United States and/or other countries.

†Please refer to additional data for catalog editing on page 3 of the pdf file.

Panasonic
ideas for life

A Truly Multifunction Machine
to Meet Various Needs in
a Wide Range of Business
Situations

USB 2.0 High-speed
10 Base-T/100 Base-TX PC connection

Wide-ranging network
connectivity

Color scanning with both
high quality and easy operation

Dependable 20-sheet
automatic document feeder

Featuring 600 x 600-dpi
laser printer

English/Spanish LCD
Language available

High-speed, 18-ppm output

Reliable flatbed scanning

KX-MB781

- Flatbed Color Scanner
- High-Speed 18-ppm Laser Print Speed
- 600 x 600 dpi Print Resolution
- Automatic Document Feeder
- Up to 18-cpm Copy Speed
- 33.6 kbps Super G3 FAX
- USB 2.0 High-Speed+ 10 Base-T/100 Base-TX



Printer

Copier

Scanner

FAX

Network

Panasonic

Global Web Sites: <http://www.panasonic.co.jp/global>

Design and specifications are subject to change without notice. 0M0707SK-KX-MB781-LT

TELECOMMUNICATIONS

Multi-Function Printer

A Business Machine with Full Networking Functions for Enhancing Business Efficiency

Helps to maximize the office's human resources!

The KX-MB781 is equipped with fax, copy, print and scan functions to handle virtually all office document processing needs. Its small footprint efficiently utilizes office space.

Each KX-MB781 function features the high performance necessary to maximize office productivity.

The new multifunctional KX-MB781 combines high speed, beautiful results and easy operation.



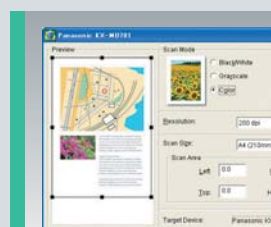
Laser Printer

Beauty Plus Convenience



Flatbed Copier

Bringing new meaning to the word "copy"



Color Scanner

The ultimate in detailed reproduction



Laser Fax

Optimal document sending and receiving



Network

Wide-ranging network connectivity



Laser Printer

Quality Laser Printing

The laser printer function helps assure high quality reproduction at 600 dpi x 600 dpi resolution in every document and drawing you want to print or copy.

USB 2.0 High-Speed PC Interface

The KX-MB781 comes standard with a USB 2.0 High-speed interface for easy connection to a PC. The bundled "Multi-Function Station" launcher software allows easy setup and selection of multiple functions.

High-Speed 18-ppm Laser Printing

The KX-MB781 boasts high-speed printing and copying at speeds of up to 18 pages per minute with quick warmup time of 15 seconds.

250-Sheet Paper Tray

Since the standard paper tray can hold up to 250-sheet, you don't have to worry about running out of paper out even during a high-volume print or fax job.

Color Scanner

Color Scanning with Flatbed and ADF

The KX-MB781 allows you to scan documents in color or black-and-white at a high resolution of 600 dpi x 1200 dpi (with flatbed), or 600 dpi x 300 dpi with an 20-sheet Automatic Document Feeder. (Max. scanning resolution of 9600 dpi x 9600 dpi is available when interpolation is used.)

High-Quality Scanning

The KX-MB781 outputs scanning images with 24-bit color gradations (48-bit input), or 8-bit black & white gray scales (16-bit input).

Image Processing Software

When the Multi-Function Station launcher software is installed on your PC, you can easily access a variety of image processing functions from the graphical menu. With the "Viewer (Scan)" menu, you can choose Page View, Reduction, Rotate, Duplicate, and Cut and Paste functions. OCR function is also available in 1-byte language designation models.

Network

The LAN connection capability lets you share the printer and scanner through the network. Operation of this multifunctional printer from a desktop PC significantly improves office productivity. A 10 Base-T/100 Base-TX interface is also provided.

Flatbed Copier

Flatbed Design

In addition to the 20-sheet Automatic Document Feeder, a built-in flatbed allows you to scan, copy, or fax a variety of originals in different shapes or sizes such as magazines, newspapers, ID cards, business cards, etc.

High-Quality Image Reproduction

A CIS (Contact Image Sensor) makes possible high-speed scanning and high-resolution image reproduction even when the spine is raised slightly above the glass plate.

High-Resolution Copier

With resolution of up to 600 dpi x 600 dpi, sharp, clear copies are assured. Multiple copies of up to 99-sheet are possible.

18-cpm Copy Speed

The KX-MB781 delivers high speed copying of up to 18 copies per minute, with a warmup time of 15 seconds.

Laser Fax

33.6 kbps High-Speed Fax Modem

The Panasonic laser fax is designed for fast, efficient fax transmission at speeds up to 33.6 kbps (4 seconds per page*1, *5).

Document Memory

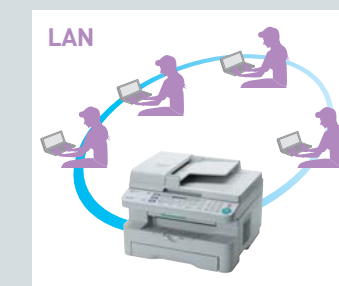
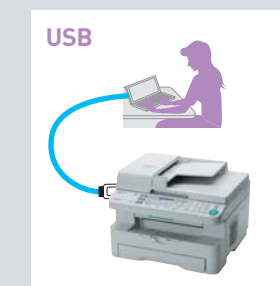
This unit can store up to 170*2 pages in its built-in memory. Ideal for broadcasting multi-page documents to multiple locations, this feature also enables out-of-paper reception of up to 150*2 pages.

Dual Access Operation

Even while the KX-MB781 is busy sending or receiving a memory-based fax, you can store additional documents to send later.

64-Level Halftone with Digital Image Processing

You can send or copy everything from family photos to company documents with near-original quality, thanks to the clarity and detail of 64 level halftone reproduction.



†Additional data for catalog editing

KX-MB780 series

		Asia	South America	Europe	North America	
Model		KX-MB788TW	KX-MB783BR	KX-MB781G	KX-MB781	KX-MB781C
Power Supply	Voltage	110V	120V	220 – 240V	120V	220 – 240V
	Herz	60Hz	50/60Hz	50/60Hz	50/60Hz	50/60Hz
Consumables	Toner	KX-FAT92E	KX-FAT92A	KX-FAT92X	KX-FAT92	KX-FAT92A
	Drum	KX-FAD93E	KX-FAD93A	KX-FAD93X	KX-FAD93	KX-FAD93A

KX-MB780 series (w/Handset)

		Europe		
Model		KX-MB783PD	KX-MB783FX	KX-MB783EX
w/Handset		●	●	●
Power Supply	Voltage	220 – 240V	220 – 240V	220 – 240V
	Herz	50/60Hz	50/60Hz	50/60Hz
Consumables	Toner	KX-FAT92E/X	KX-FAT92E/X	KX-FAT92E/X
	Drum	KX-FAD93E/X	KX-FAD93E/X	KX-FAD93E/X